



Immunizations in Dane County: How Are We Doing?

Wilmot Valhmu, PhD (WI DPH/SRO)
Kathy Boldt (PHMDC)
Freddi Adelson, RN, MS (MMSD)



1

Overview

- Summary of key findings
- Dane County Immunization rates by vaccine, client age, and birth cohort
- PHMDC immunization clinics data
- Dane County school districts immunization waivers
- Discussion of findings and implications



2

Summary of key findings

- 6000-7000 births per year in Dane County
- Substantial increase in % up-to-date (UTD), according to WIR
- Most vaccines are in the 80-90% UTD rate range
 - Except DTaP



3

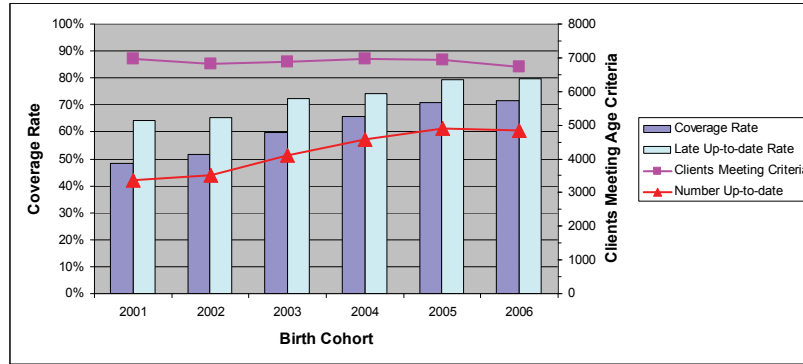
Summary of key findings

- Half of the PHMDC immunization clients are uninsured for vaccines
- MMSD school immunization waivers
 - Medical waivers show decrease over last 17 school years
 - Personal convictions rose this school year
- Wide variations in waivers across school districts in Dane County

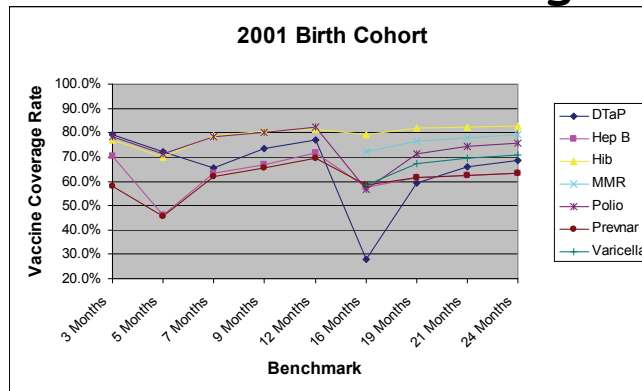


4

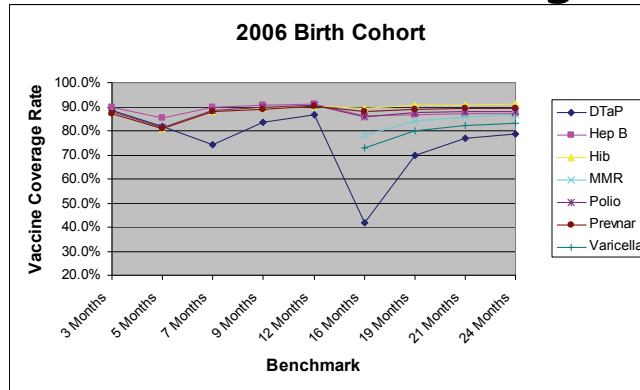
24-month Benchmark (4-3-1-3-3-1) Coverage



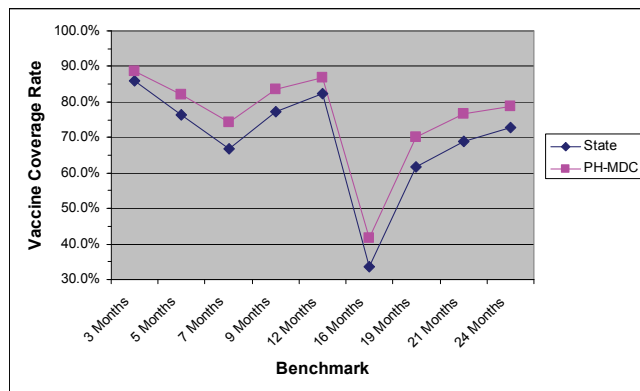
Immunization Coverage



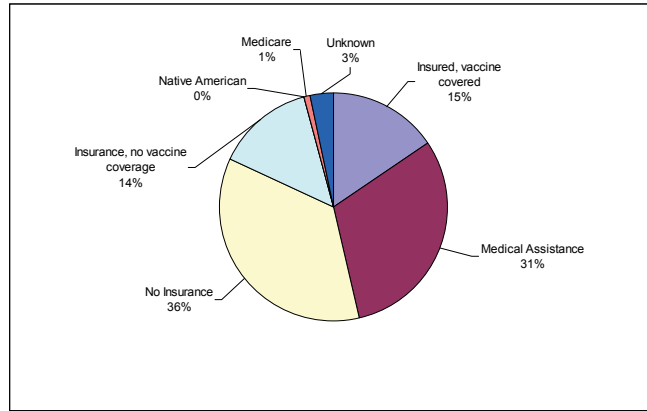
Immunization Coverage



DTaP Coverage Rates: 2006 Birth Cohort

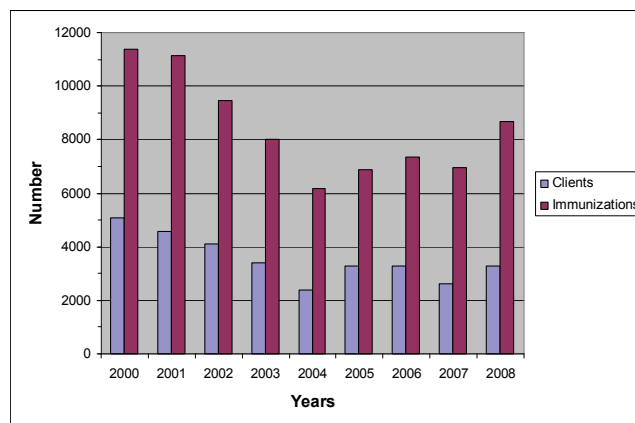


2008 Immunization Insurance Coverage: Public Health - Madison/Dane County



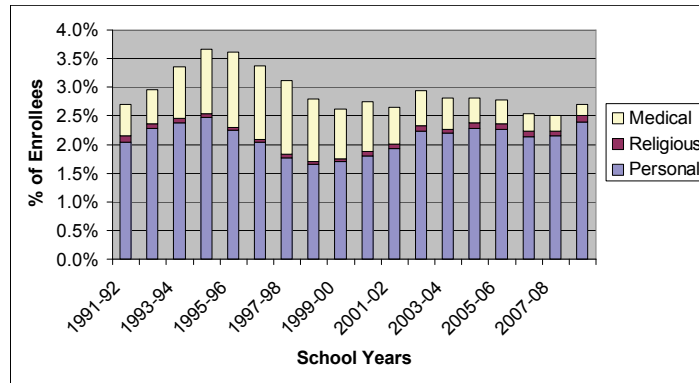
9

PHMDC Immunization Clinics: Clients and Immunizations, 2000-2008

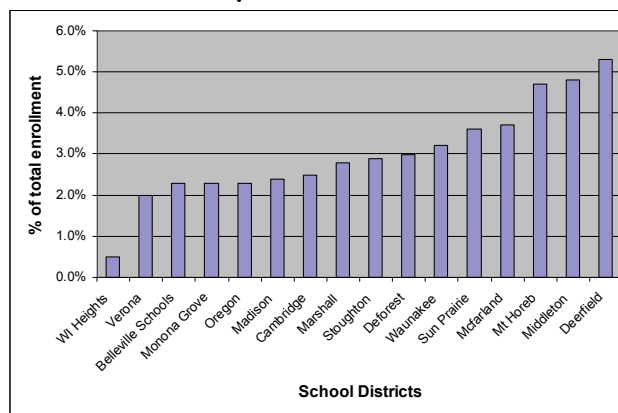


10

MMSD Immunization Waivers: 1991 - 2009



2008-2009 Personal Conviction Waivers: Dane County School Districts



Discussion

- DTaP immunization rate troughs
 - What's responsible?
 - How can we overcome these?
- Personal conviction waivers
 - What do the data mean?
 - What are the implications?



13

Contacts

- Wilmot Valhmu, PhD
(608) 266-0008
wilmot.valhmu@wi.gov
- Cheryl Robinson, RN, MS
(608) 243-0401
crobinson@publichealthmdc.com
- Freddi Adelson, RN, MS
(608) 663-8427
fadelson@madison.k12.wi.us



14