

TRANSMISSION-BASED PRECAUTIONS REFERENCE GUIDE

This reference guide may be used to prevent the transmission of common diseases in health care settings. This is not a comprehensive list. See Resource section below for link to CDC's complete list.

STANDARD PRECAUTIONS

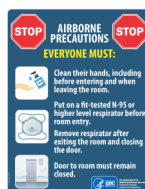
- Should be used on all resident care.
- Based on risk assessment and common sense practices and personal protective equipment use that protect the healthcare provider from infection and prevent the spread of infection from resident to resident.

CONTACT PRECAUTIONS



- Gown and gloves required when entering the room.
- Remove PPE and perform hand hygiene (**if enteric**, soap and water is required) before leaving the room.
- Use dedicated equipment whenever possible.
- Disinfect equipment prior to removing it from the room.

AIRBORNE PRECAUTIONS



- Negative air pressure room required. If not available, keep room door closed.
- N-95 respirator or PAPR required when entering the room.
- Resident must wear surgical mask for transport.

ENHANCED BARRIER PRECAUTIONS



- Gown and gloves required when performing high-contact resident care activities.
- Remove PPE and perform hand hygiene before leaving the room.
- Use dedicated equipment whenever possible.
- Disinfect equipment prior to removing it from the room.

DROPLET PRECAUTIONS



- Surgical mask and eye protection required when entering the room.
- Disinfect equipment prior to removing it from the room.
- Resident must wear surgical mask for transport.

RESOURCES

- [CDC: Guideline for Isolation Precautions: Preventing Transmission of Infectious Agents in Healthcare Settings \(2007\); Appendix A](#)
- [CDC: Type and Duration of Precautions Recommended for Selected Infections and Conditions](#)
- [DHS: Transmission-Based Precautions Reference Guide](#)
- [CDC: Enhanced Barrier Precautions Sign \(in Spanish\)](#)
- [CDC: Contact Precautions Sign \(in Spanish\)](#)
- [CDC: Droplet Precautions Sign \(in Spanish\)](#)
- [CDC: Airborne Precautions Sign \(in Spanish\)](#)



Scan me to access this document online and click links



STANDARD PRECAUTIONS

Hepatitis, viral type A, B, C, E, or G

Use at all times



ENHANCED BARRIER PRECAUTIONS

Candida auris

Carbapenemase-Producing Carbapenem Resistant Enterobacterales (CP-CRE)

Carbapenemase-Producing Carbapenem Resistant Pseudomonas aeruginosa (CP-CRPA)

Carbapenemase-Producing Carbapenem Resistant Acinetobacter baumannii (CP-CRAB)

Remain in isolation precautions for the duration of the stay



CONTACT PRECAUTIONS

Lice

Scabies

Clostridioides difficile (C. diff) (Contact Enteric)

Norovirus (Contact Enteric)

Rotavirus (Contact Enteric)

Diarrhea of an unknown cause (Contact Enteric)

Isolate until 24 hours after initiation of effective therapy

Isolate until asymptomatic for 48 hours

Isolate until asymptomatic for 24 hours



DROPLET PRECAUTIONS

Influenza

Isolate for 7 days after symptom onset or until 24 hours after resolution of fever and respiratory symptoms, whichever is longer



AIRBORNE PRECAUTIONS

COVID-19 (in addition to airborne precautions, also requires contact precautions and eye protection)

Herpes Zoster/Shingles - disseminated rash (≥ 3 dermatomes) or in an immunocompromised resident (in addition to airborne precautions, also requires contact precautions)

Refer to current [CDC guidance](#)

Isolate until all lesions are dry and crusted over