

## Lake View Elementary Traffic Safety Plan

We have created a safety plan so all students arrive at school and are picked up from school in a SAFE way.

The plan will reduce congestion in front of the school on Tennyson and in the driveway at both arrival and dismissal times and will keep our crosswalks visible for the safety of our children.

If you drive, walk or bike your child to or from school, please read the guide and determine a plan for getting your child to school safely and ensuring the safety of all Lake View students on their way to and from school.

### If You Walk to/from School . . .

- Arrive **after 8 am**, when staff is present.
- Always use the crosswalks, crossing guards or student patrols to cross streets – don't cross mid-block.
- An adult crossing guard is located at N. Sherman at Tennyson.
- Student safety patrols are located on Tennyson at Spencer and Eliot.



### If You Bike to/from School . . .

If you want to ride your bike to school, you need to be in 5th grade and have written permission from your parent and principal.

- Always wear your helmet.
- Walk bike in crosswalk, on school grounds and sidewalks.
- Park and lock your bike in the bicycle rack, near the shed by the office.

### If you are Driving to/from School . . .

Arrive **after 8 am**, when staff is present.



If traveling northbound on N. Sherman, turn right on Thackeray and left on Eliot, either:

- Drop off or park on Eliot and have child walk down Tennyson to Spencer and cross with safety patrol OR
- Turn left onto Tennyson and drop off in designated drop off areas.

If coming from Packers/CV, go straight down Tennyson and drop off in designated areas.

If coming from Northport/Berkeley Oaks Neighborhood, drive up either Eliot or Spencer.

- Drop off or park and walk with child to school and have child cross Tennyson with the safety patrol at Spencer OR
- Turn left onto Tennyson and drop off in designated drop off areas

Designated drop off areas:

**Tennyson Lane:** Drop your child off in the No Parking area, which allows for stopping, but you cannot leave your car unattended.

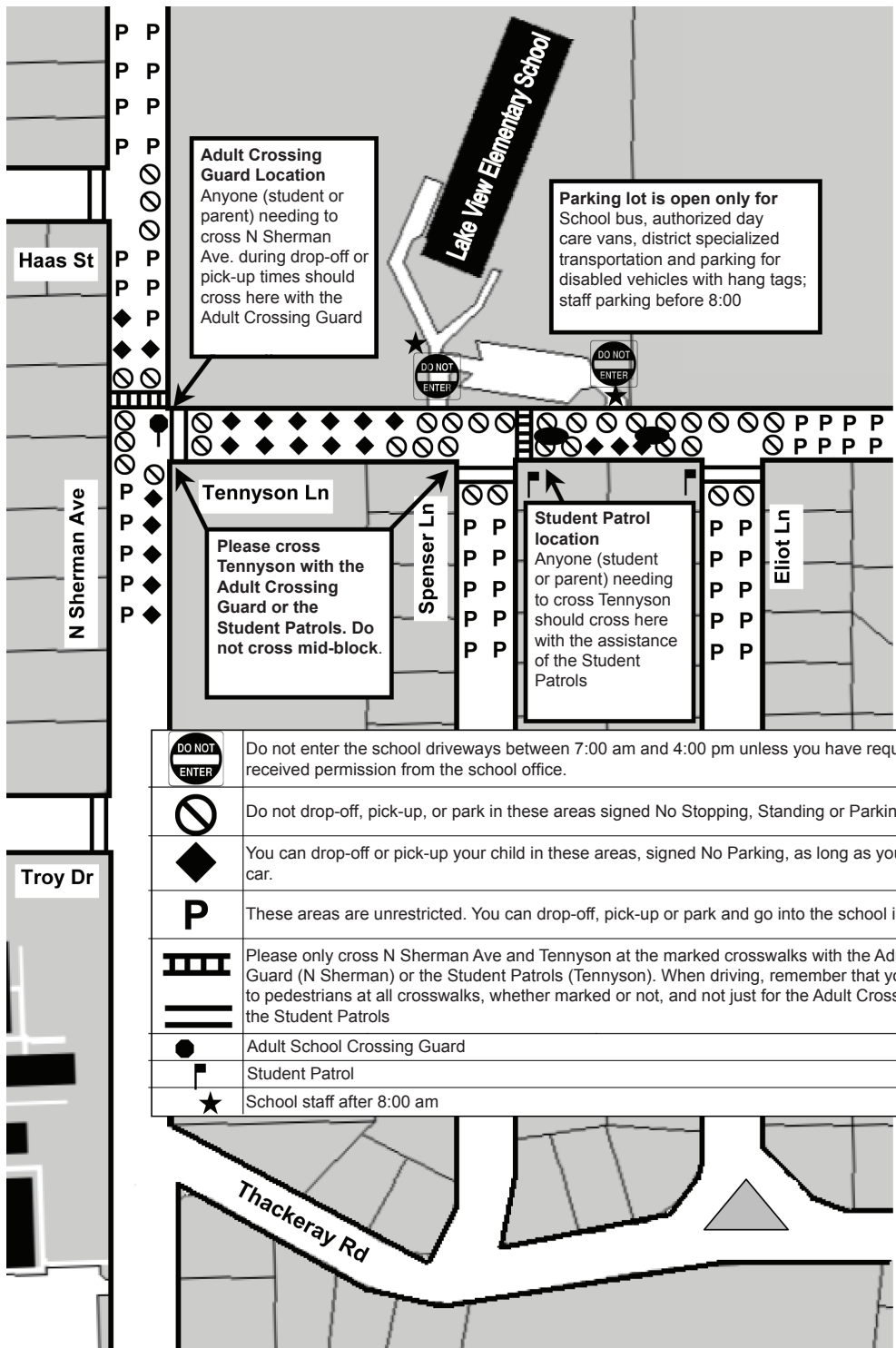
**N. Sherman:** Drop off in the No Parking areas (do not leave car unattended) or drop off or park and walk with child in the unrestricted areas. Cross N. Sherman or Tennyson with the Adult Crossing Guard.

The teacher's parking lot is **only** for staff, yellow school buses, authorized day care vans, specialized transportation and parking for people with disability hang tags - not drop off, pick up or turn around area.

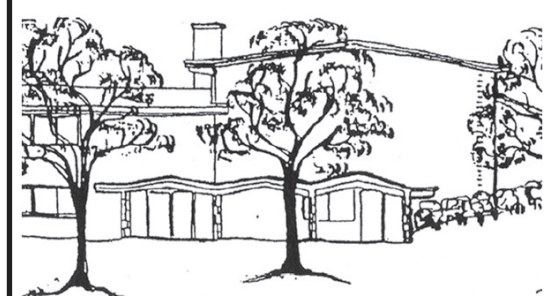
### Observe All Street Signs and Traffic, Parking and Pedestrian Laws

The Madison Police Dept. will ticket any parent/caregiver who breaks these laws while dropping off/picking up their child.

- “No Parking” areas do allow for drop off or pick up, **BUT you cannot leave your car unattended!**
- “No Stopping, Standing or Parking” means just that – **student drop off/pick up is NOT allowed.**
- It is illegal to park within:
  - 4 feet of a driveway
  - 20 feet of a crosswalk
  - 30 feet of a stop sign
- Motorists must yield the right of way to pedestrians crossing a street at any marked or unmarked crosswalk where there is no traffic signal.
- **Pedestrians do not have the right of way when crossing mid-block. Please use designated crosswalks.**
- It is illegal to double park to drop off/pick up your child, even if you remain in the car. This disrupts traffic and is not safe.
- It is illegal to stop in an intersection. Do not block Tennyson or Eliot if traffic backs up. Allow drivers on side streets to get out.



# School Traffic Safety Plan



## Lake View Elementary School

Spring 2009