

Welcome to Lincoln Elementary School

Your safety is important to us!

If You Walk to School . . .

Always use the crosswalks and crossing guards to cross the streets.

Do NOT cross in the middle of the street.

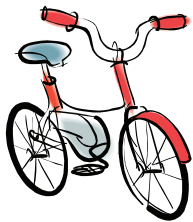
Always use sidewalks when available.

We have a pedestrian helper at the corner of Cypress and Sequoia to assist students crossing safely.



If You Bike to School . . .

Students should ALWAYS wear helmets while biking, follow all rules of the road, and plan to lock their bikes while school is in session.



If You Drive to School . . .

ALL drop-offs should be made going NORTHBOUND on Cypress at the entrance to the playground or at the main entrance to the school going EASTBOUND on Sequoia Trail. You MUST stay with your vehicle!



Parents can also park in designated street areas and walk their children to school property.

Parents need to observe all street signs and all traffic, parking, and pedestrian laws.

The Madison Police will ticket anyone who breaks these laws while dropping off or picking up their child.

Lincoln Elementary is an urban school with few parking possibilities. On-street parking is available and marked by the city.

If you have unusual circumstances or require ADA accommodations to access the school, please call the office for help at 204-4900.

Riding the Bus to School . . .

We STRONGLY encourage all students on bus routes to ride the buses to school.

Students need to wait for the bus on the sidewalk and stay out of the street.

Students should enter the bus single file.

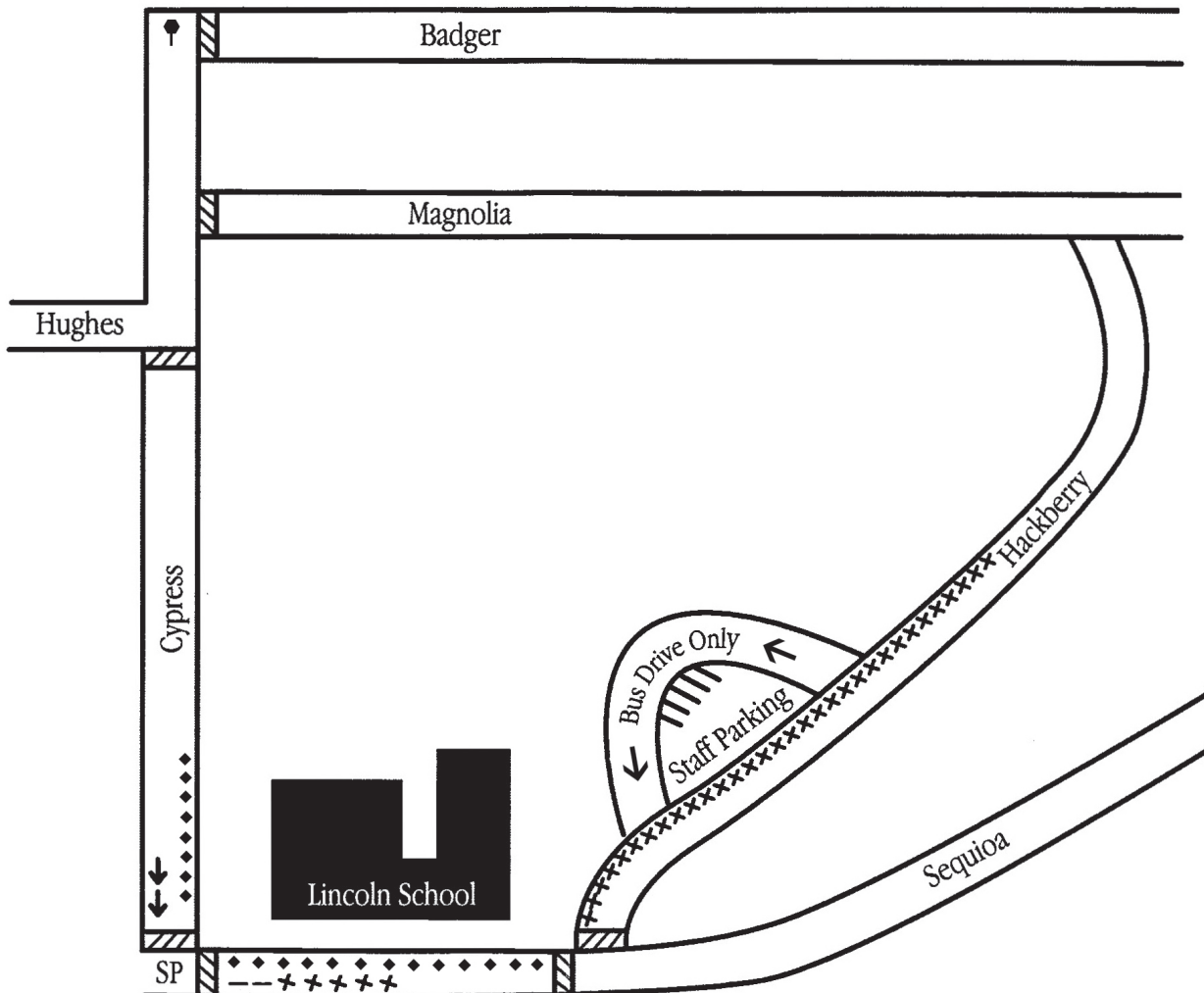
Students should never reach under the bus to get something, ask the driver for help.

Students need to cross the street at least 10 feet in front of the bus after getting an "ok" sign from the driver.

We encourage all parents and guardians to meet Lincoln students at their bus stops at the end of the day or to have a designated grown-up meet them.



These guidelines were created by the Lincoln School staff, City of Madison Police & Traffic Engineering, Public Health – Madison & Dane County, Madison Area Safe Kids Coalition, and Safe Communities.



- Marked Crosswalk
- Can leave car and come in school. 10 minute parking.
- ◆ No Parking - Drop-off / Pick-up Allowed
- ↓ Student drop-off on opposite of street - must use Safety Patrol to cross.
- *** No Drop-off / Pick-up (No Stopping, Standing or Parking)
- ♣ Adult Crossing Guard
- SP Lincoln Staff Safety Patrol
- One Way

Lincoln Elementary Traffic Safety Brochure

2008 - 2009 School Year

909 Sequoia Trail
Madison, WI 53713
(608) 204 - 4900

