

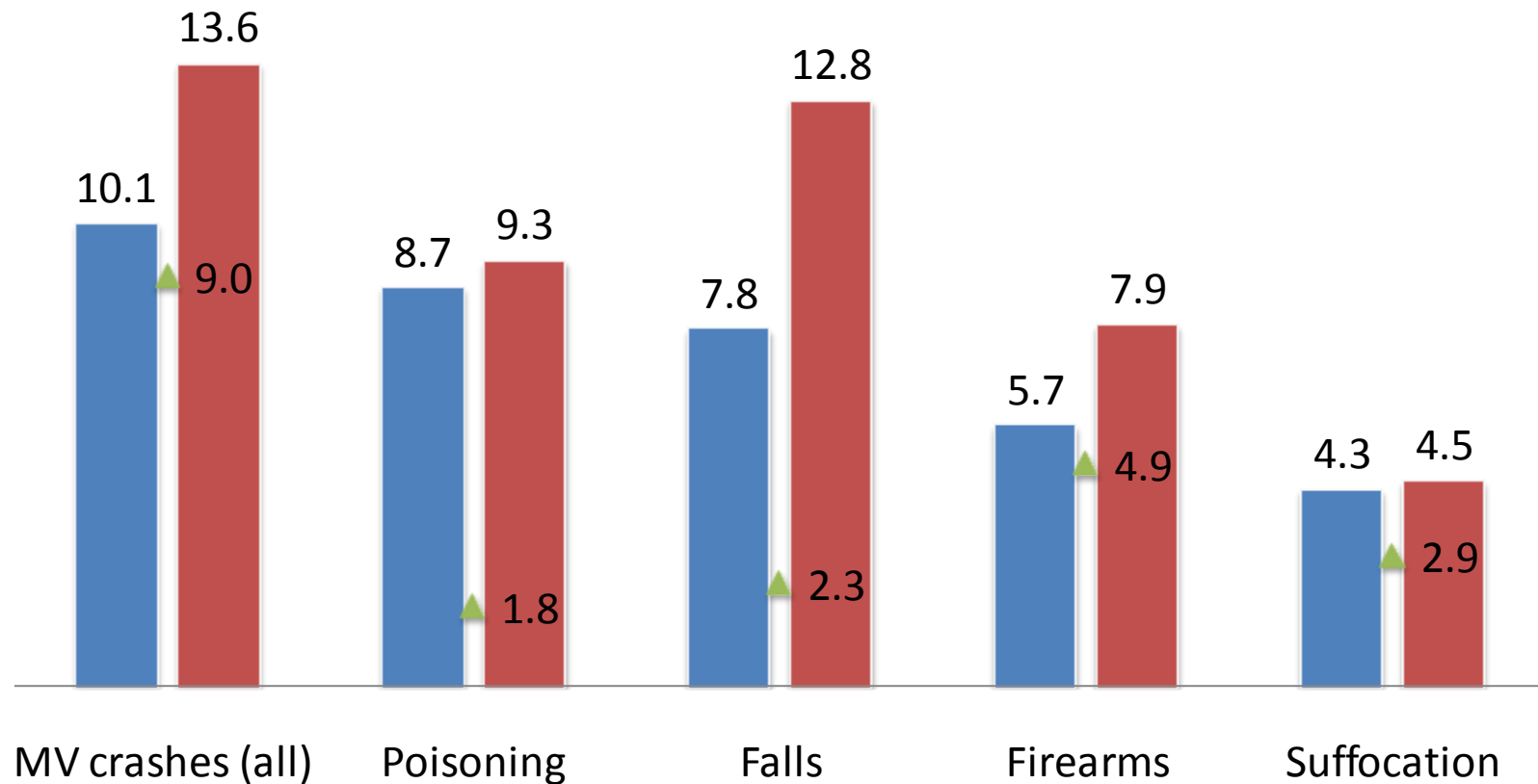
Injuries in Dane County 2002-2006



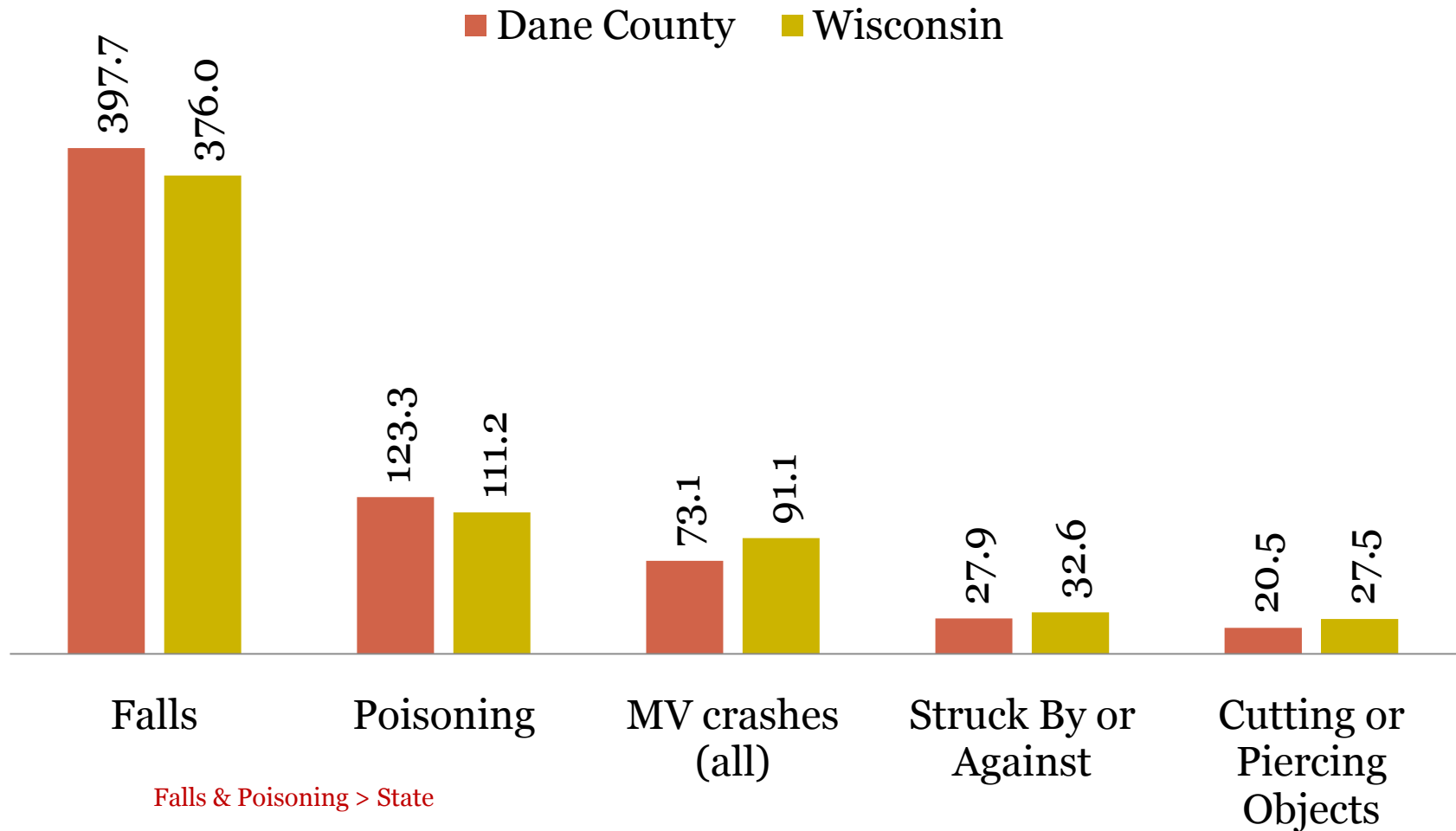
LISA BULLARD-CAWTHORNE, MS, MPH
PUBLIC HEALTH – MADISON & DANE COUNTY

Injury Deaths by Underlying Cause in Dane County & Wisconsin (2002-2006) (age-adjusted death rate per 100,000)

■ Dane County ■ Wisconsin ▲ Healthy People 2010

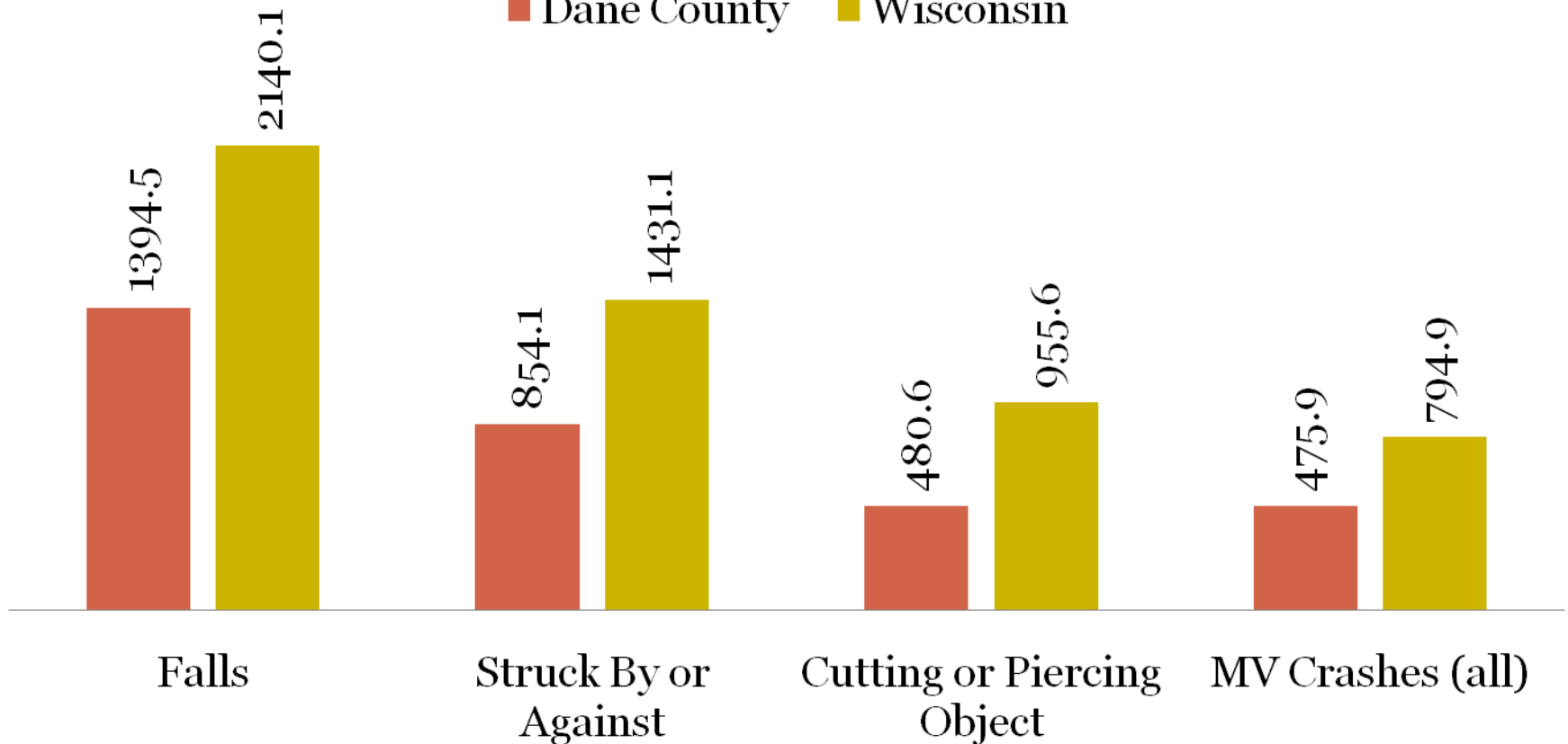


Injury Hospitalizations by Underlying Cause in Dane County & Wisconsin (2002-2006) (age-adjusted hospitalization rate per 100,000)



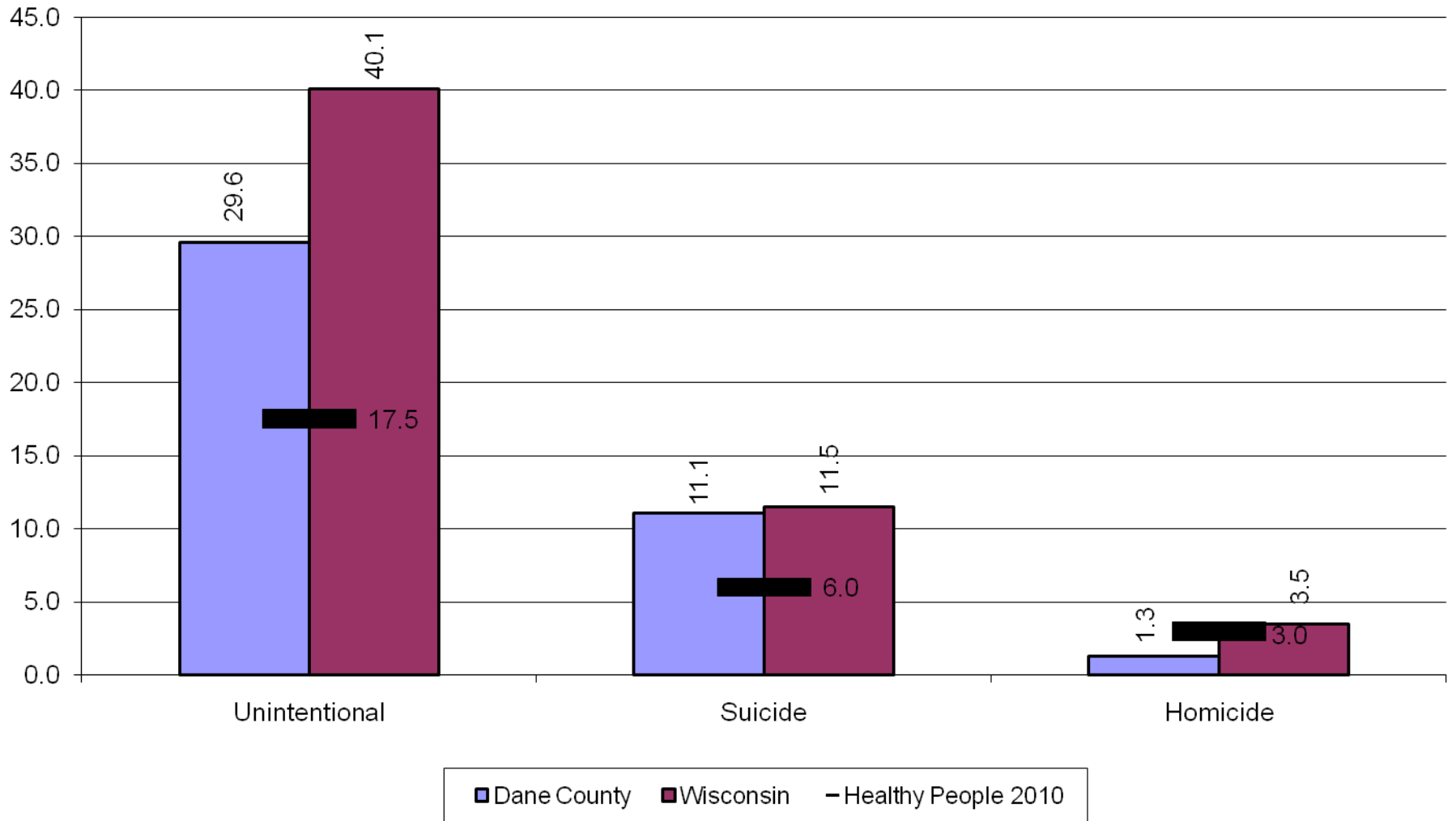
Injury-Related Emergency Department Visits by Underlying Cause in Dane County & Wisconsin (2002-2006) (age-adjusted rates per 100,000)

■ Dane County ■ Wisconsin

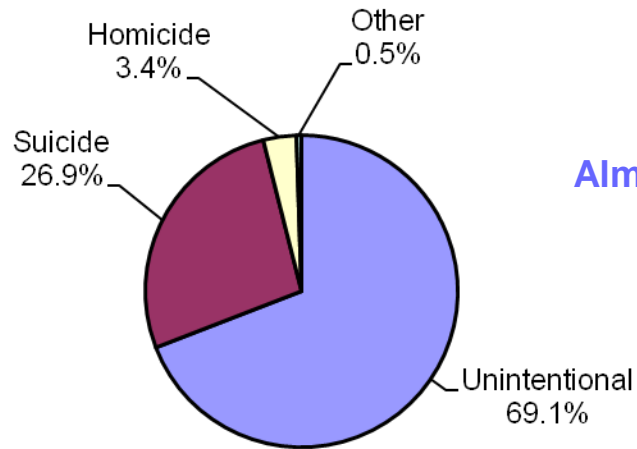


Injury Deaths by Intent or Manner in Dane County & Wisconsin (2002-2006)

(age-adjusted rates per 100,000)

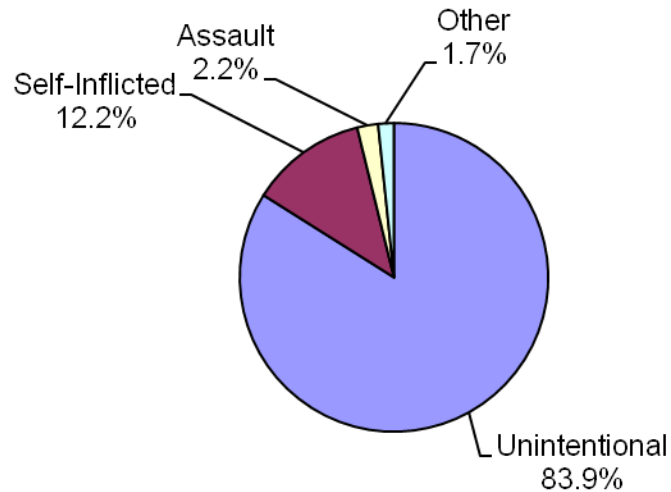


Injury Deaths by Intent or Manner in Dane County (2002-2006)



Almost 1/3 of injury-related death
→ Suicide

Injury Hospitalizations by Intent or Manner in Dane County (2002-2006)



Cost of Injury Hospitalizations



Cause of Injury Hospitalization	Total Charge (number)	Average Charge	Percent
1. Falls	\$ 35,634,614* (1,671)	\$ 21,325	41%
2. MV- Occupant	\$ 9,499,579 (227)	\$ 41,848	11%
Total Cost for All Injuries	\$ 86,366,161	---	

*One quarter of cost is due to Falls.

Highest average cost for injury-related hospitalizations:
Firearms - \$92,936

Age Differences in Injuries



Age (years)	Leading Cause(s) of Death	Leading Cause(s) of Hospitalization
0 - 4	Suffocation	Falls
5 -14	Drowning, Motor Vehicle	Falls
15 -24	Motor Vehicle - Occupant	Poisoning
25 - 34	Poisoning , MV-Occupant	Poisoning
35-44	Poisoning	Poisoning
45-64	Poisoning	Falls
65 +	Falls	Falls

Gender Differences in Injury Death



Gender	Leading Cause - 1	Leading Cause - 2	Leading Cause - 3
Male	Poisoning	Motor Vehicle - Occupant	Firearms
Female	Poisoning	Falls	Motor Vehicle - Occupant

Injury Cause/Intent Specific



Motor Vehicle Crashes (2006)



	Total	Motor cycle	Bicycle	Pedes-trian	Deer
Crashes	9,584	159	130	112	956
Death	44	7 (16%*)	0	3	0
Injuries	2,963	130	126	108	25
Property Damage	6,580	22	4	1	931
Average Cost		\$42,306	\$18,352	\$43,866	

* % of all 44 deaths

Motor vehicle crash fatalities are greater (74%) in rural areas

Motor Vehicle Crashes in 2006



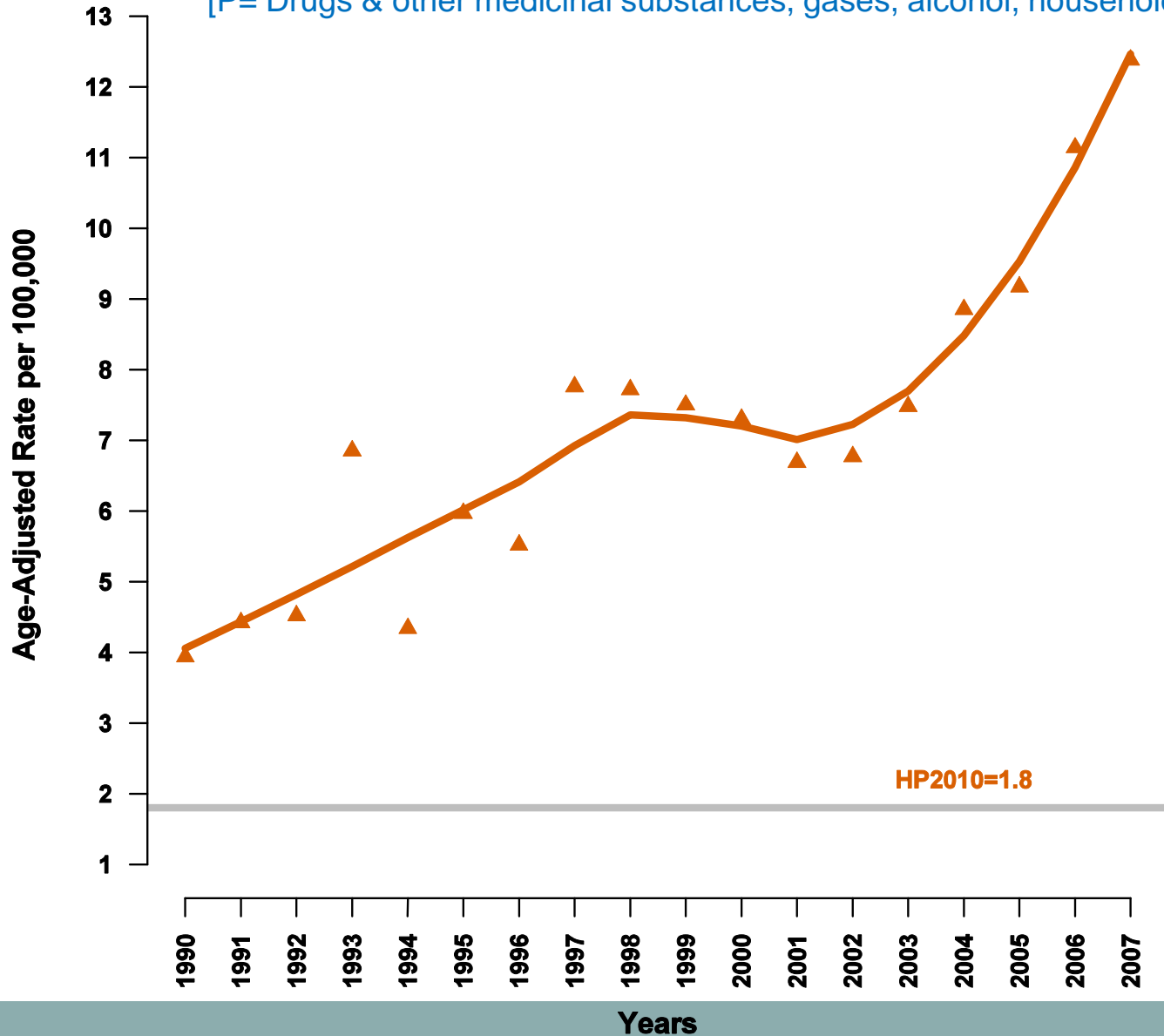
	Total MV	Speed-Related	Alcohol-Related
Crashes	9,584	730	535
Killed	44	16	22
Injuries	2,963	723	442
Hospitalized Injuries	331	---	---
Percent (all crashes)	--	15%	8%
Cost			

Top causal factors (preventable) for MV fatalities:
speed, alcohol & failure to wear seatbelt/use car seat

98% (6,621) of those not injured in MV crashes were using safety equipment (seat belts or car seats)

Poisoning Deaths Trend Dane County 1990-2007

[P= Drugs & other medicinal substances, gases, alcohol, household cleaning supplies, food]



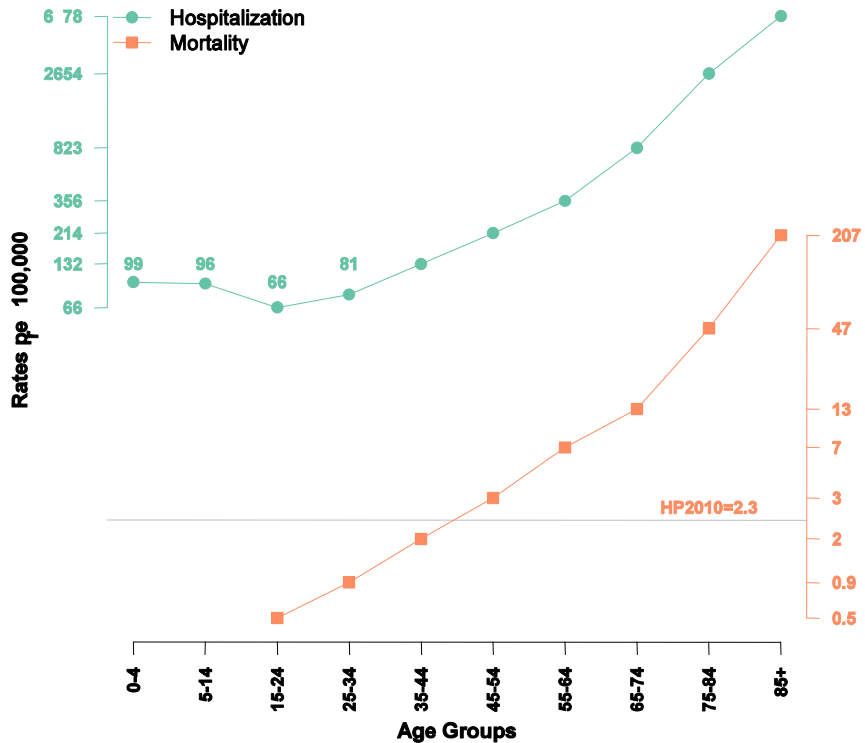
DC: Highest in
35-44 age group

DC: Unintentional
almost 2X >
intentional

National: 95%
unintentional poisoning
due to drugs →
more than half of this →
prescription drugs

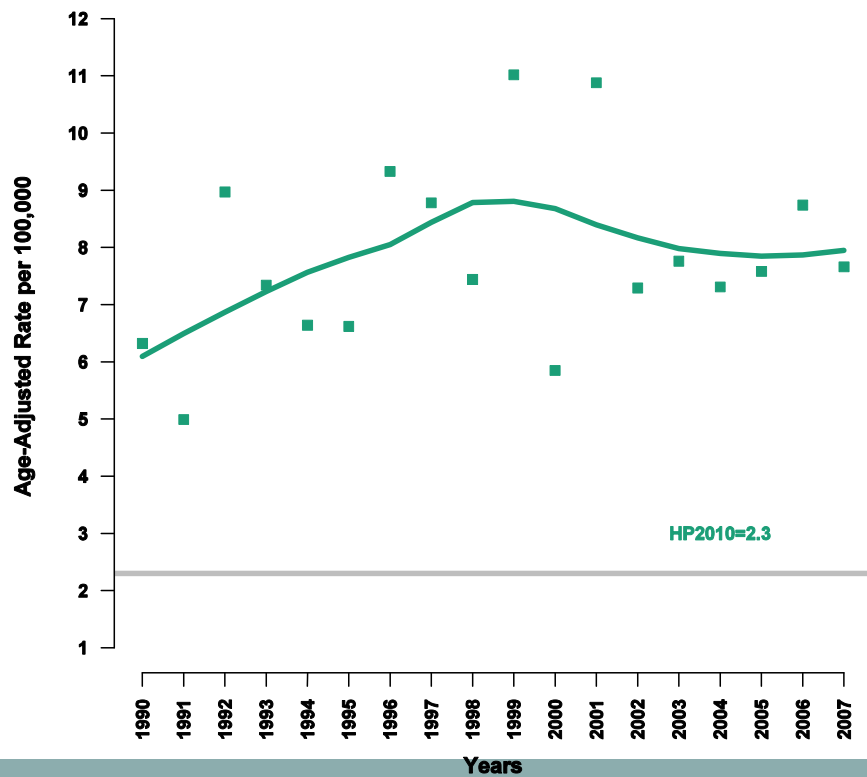
HP2010=1.8

Fall Injury Hospitalization and Mortality Dane County 2001-2006

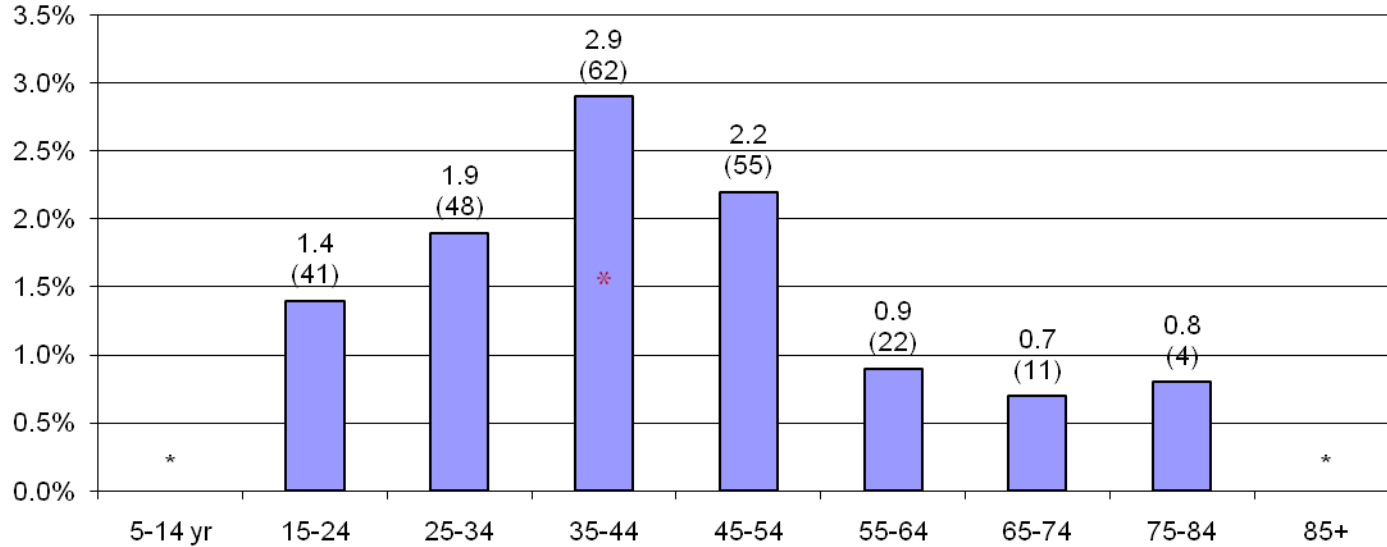


After age 65, both death & hospitalizations from **falls** dramatically increases.

Fall Deaths Trend Dane County 1990-2007



Suicide Death by Age Group in Dane County (2002-2006)
(Death Rate per 100,000)



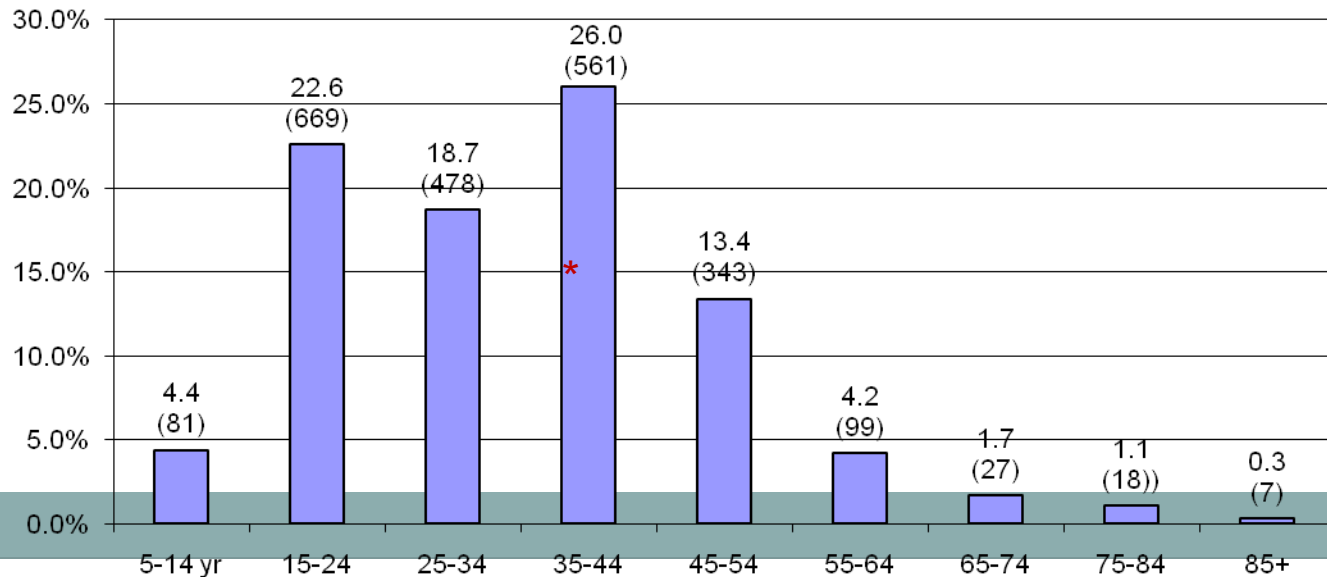
1: 35-44 yrs

2: 45-54 yrs

Suicide death rate:
Male 3X > Female

*Numbers too small

Suicide Attempts (Self-Inflicted Hosp.) by Age Group in Dane County
(2002-2006) (Hospitalization Rate per 100,000)



1: 35-44 yrs

2: 15-24 yrs