

# Back to School Safety

**Gina Aguglia, LCSW**

Director of Cross Systems &  
Critical Response

**Sedric Morris, Sr.**

Director of Safety & Security

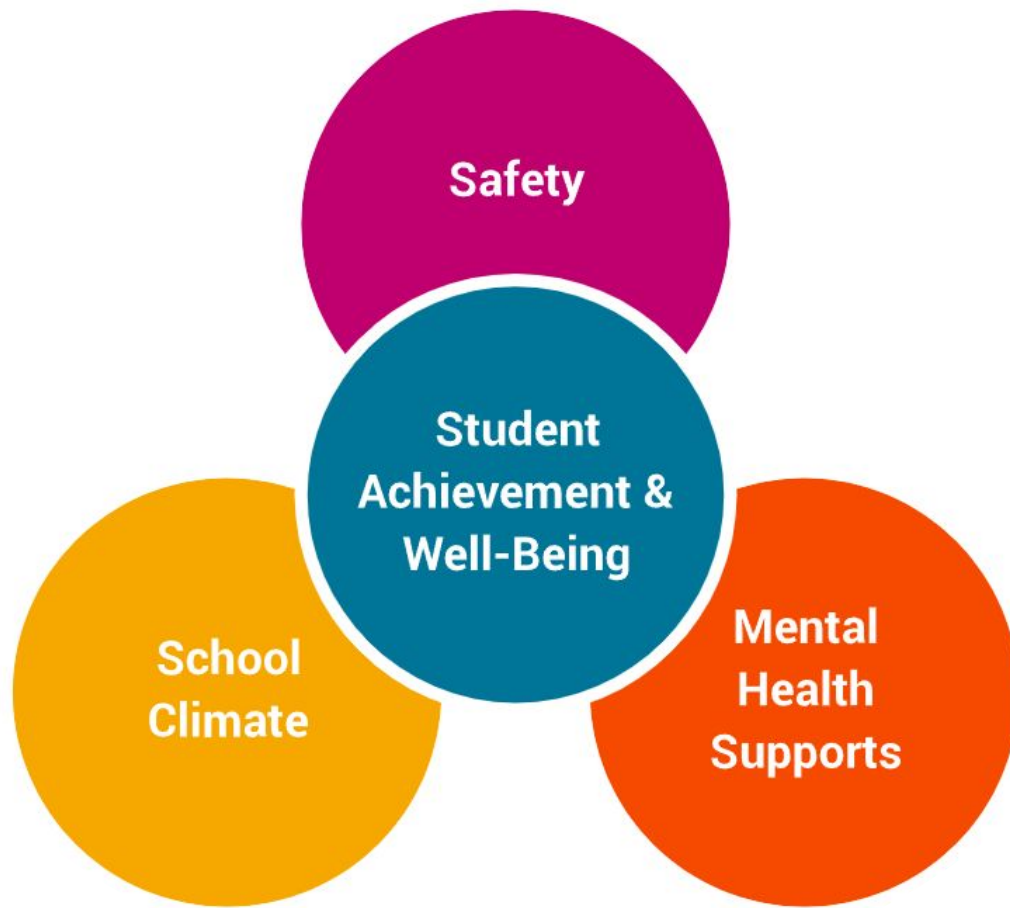
**Co-Directors:**

**Office of School Safety**



# Focus on **physical** , **psychological** , **and social** **emotional** **safety.**

- Welcoming Climate
- Strong Relationships
- Mental Health Assets
- Preparedness
- Restorative Practices
- Parent support
- Family Engagement and Collaboration
- *Education is Activism*





---

IN THIS CLASSROOM, WE BELIEVE:  
BLACK MINDS MATTER  
**LOVE IS LOVE**  
ABILITY BEFORE DISABILITY  
ALL STUDENTS, REGARDLESS OF IMMIGRATION STATUS, BELONG HERE  
YOUTH VOICE MATTERS  
YOUR GENDER IDENTITY MATTERS  
DIVERSITY MAKES US STRONGER





# Connection



# Relationships



2022-2023

# Mental Health in Schools

*“A key aspect of this vision is approaching mental health as an asset that can be developed in schools, rather than a problem that needs to be addressed.”*

*~ Jill K. Underly, PhD, Wisconsin State Superintendent*



## Department of Student & Staff Support

The Department of Student & Staff Support exists to reduce barriers to learning; helping scholars grow to be college, career, and community ready

### WE DO THIS BY

Developing and supporting the implementation of a cohesive, tiered system, that promotes social emotional wellbeing and provides a continuum of services to address physical and mental health needs.

## Office of school safety

The Office of School Safety works with school principals and school-based critical response teams to ensure our schools balance the physical safety of our students, staff, and school buildings with the importance of social, emotional, and psychological safety.



*We believe that the safest schools are those that foster a climate of support and respect and that instill a sense of community.*

# Preparedness

---





# District Critical Response Team (DCRT)

---

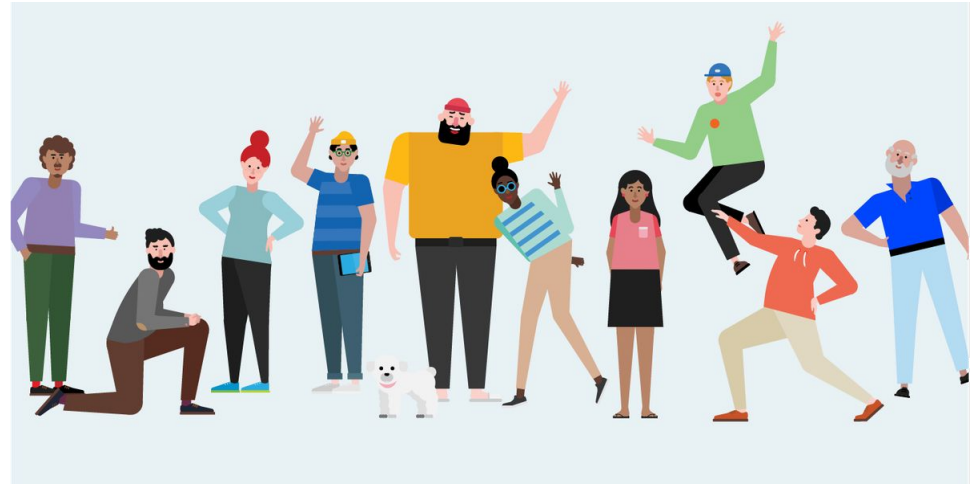
- Student and Staff Support
- Office of School Safety
- Building Services
- Communications
- Legal Department
- Associate Superintendent's Office



# School Based Critical Response Team

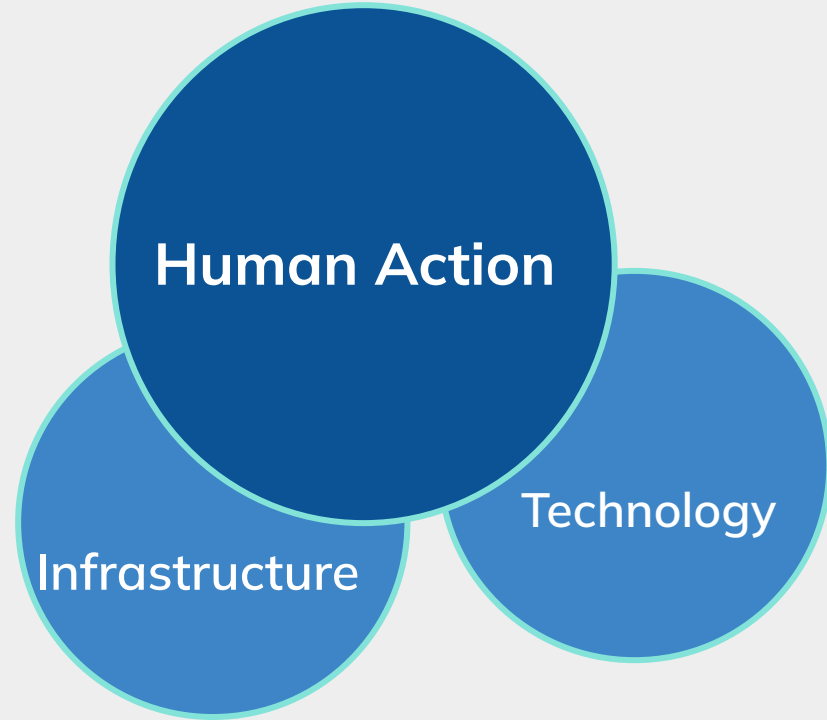
---

- Principal/Asst. Principal
- School Social Worker
- School Psychologist
- School Counselor
- School Nurse
- Dean of Students/
- Behavior Support Coaches
- Safety/Security Representative
- Clerical
- Custodial
- Others, as needed



# Expect positive outcomes. Plan for any hazard.

- School safety assessments
- Standard Response Protocol (SRP)
- Emergency procedures
- Critical response team training
- Proactive collaboration with emergency responders
- Reporting systems and practices in place



# **Standard Response Protocol (SRP)**



# Standard Response Protocol (SRP) Training

**Required:** Staff Training \* Student Training \* Parent Communication

**The building blocks of crisis response.  
New action. New look. SRP-2023**



**Hold**



**Secure**



**Lockdown**



**Evacuate**



**Shelter**



# EMERGENCY PROCEDURES

**POLICE/FIRE:** [911](#)

(See below for tips when calling 911.)

**OFFICE OF SCHOOL SAFETY**

[663-1632](#) (7:00 a.m.–4:30 p.m.) | 220-2707 (after 4:30 p.m.)

**These are in each  
classroom across  
the district!**

[mmsd.org/besafe](https://mmsd.org/besafe)

WHEN CALLING 911

CONFLICT MANAGEMENT

FIRE

GAS LEAK CHEM/BIO/HAZARD

SEVERE WEATHER

FIGHTS AND DISTURBANCES

SUSPICIOUS PERSON






MISSING PERSON

MEDICAL EMERGENCY

MANDATORY REPORTING

BOMB THREAT

# Completion of SRP Practice Drills

Evacuate		1x/Month	Not Announced
Shelter		2x/Annually	Not Announced
Hold, Secure	 	2x/Annually	Not Announced
Lockdown*		1x/Annually	WITH ADVANCE NOTICE

*\*Lockdown drills will be scheduled in advance and again completed in partnership with Central Office and the Madison Police Department. Preplanning, drill, and debriefing will promote consistency and best practice.*



**Address Conflict,  
Restore, Repair  
Harm, Debrief  
Incidents**





# Family Partnership

# What can parents do?

- Encourage and support safety at home, school safety, violence prevention, and our preparedness programs at home through reading and reviewing MMSD's Standard Response Protocol and new website!
- Understand parent roles during a school emergency, knowing the best location to wait for instructions.
- Provide your child's school with requested contact information and keep open lines of communication.
- Limit media exposure during distressing world events
- If a distressing event occurs:
  - Talk with your child about it
  - Limit the information to facts only and it is okay to say you don't know if you don't know
  - Re-engaging in routines is an important part of response after an event



# Caregivers and Staff, **TOGETHER.**

- **WATCH** for concerns noted by any school staff, students or parents
- **REFER** to Student Services Team who will connect student to best supports for specific needs
- **RESOURCES:** Assessment, consultation and creativity in sorting out the needs of students with the best matched supports, both school based and in the community
- **COMMUNICATE (2-Way)** with other school staff, students and parent

**Change is best supported when we are all working together (Student, Caregiver, School staff)**

# How to connect with school based resources?

- Attend Family Night!
- Read our Newsletters!
- Call your school and ask for student the services staff connected to your student's grade level/age group!
- Reach out to school's student services and support staff directly using the [Staff Directory](#)!
- Watch for updates on our websites for easier ways to get connected!

# Brand New Website!



## Three Phases of Emergency Management

To illustrate our approach to school safety, our actions are categorized into the three phases of emergency management. Much of this work overlaps, but organizing our strategy in this way helps to describe how this looks in schools.

### Prevention

Schools safe begins with proactively eliminating or reducing the likelihood of unsafe behaviors or events from taking place - whether at school, at home, or in the community.

### Preparedness and Protection

Preparedness in school safety refers to how staff plan, organize, equip, train, and exercise our procedures. Protection involves securing our schools against threats to safety.

### Response and Recovery

After an incident has taken place, our response and recovery efforts aim to stabilize the situation, and establish a safe environment as we begin to restore and repair.

[www.madison.k12.wi.us/office-of-school-safety](http://www.madison.k12.wi.us/office-of-school-safety)

